

Welcome to the  
**36<sup>th</sup> Tulsa Engineering Challenge**

*Welcome to the Future*

A **Tulsa Engineering Foundation** Event  
 at **Tulsa Community College Aviation Center**

March 8, 2024

**PRE-REGISTERED EVENTS**

- C. Chemical Switch
- D. Digital Poster
- E. Extreme Engineering
- F. Electric Motor
- H. Paper Airplane – Distance
- H. Paper Airplane – Duration
- I. Ping Pong Ball Launcher
- J. Rubber Band Vehicle
- K. Robot
- L. Toothpick Bridge
- M. Wacky Wonder Works

- American Institute of Chemical Engineers (AIChE)
- Tulsa Engineering Foundation (TEF)
- American Electric Power / Public Service of Oklahoma (AEP/PSO)
- Institute of Electrical and Electronics Engineers (IEEE)
- Aeronautical Engineers
- Aeronautical Engineers
- Society of American Military Engineers (SAME)
- American Society of Mechanical Engineers (ASME)
- AAON, Inc.
- American Society of Civil Engineers (ASCE)
- Oklahoma Society of Professional Engineers (OSPE)

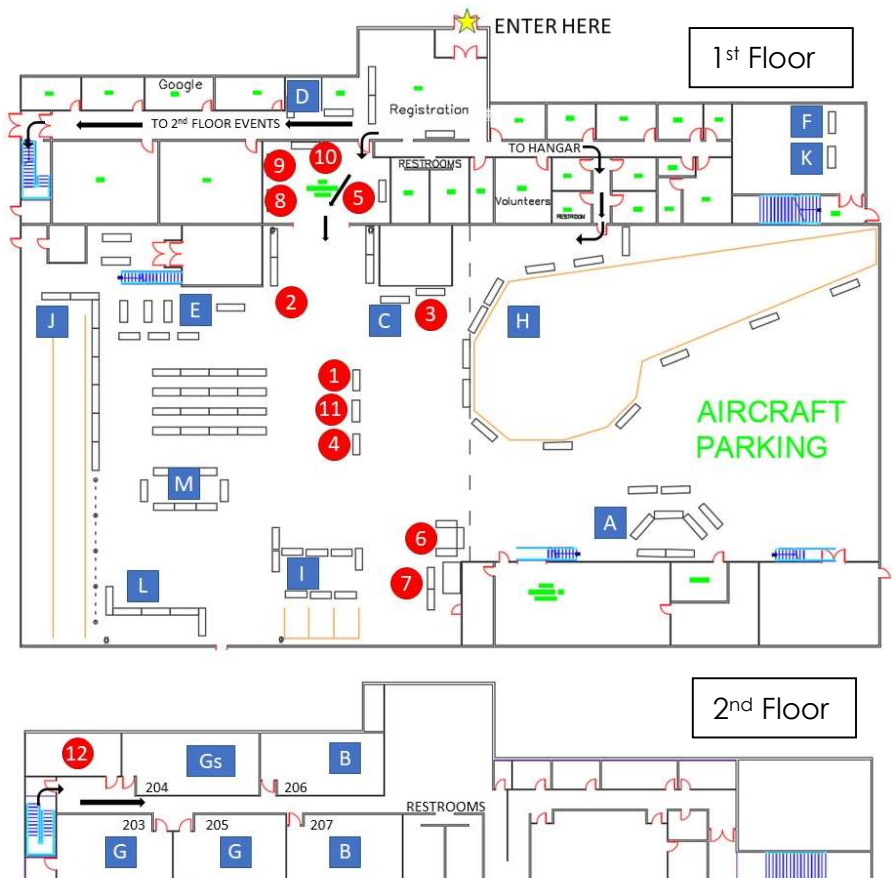
**WALK-IN EVENTS**

- A. Aluminum Boat
- B. Academic Olympiad
- G. Mini Math

- Oklahoma Society of Professional Engineers (OSPE)
- CEC - Infrastructure Solutions
- Society of Manufacturing Engineers (SME)

**EXHIBITORS**

1. American Welding Society (AWS)
2. Chemistry/Physics Magic - Society of Women Engineers (SWE)
3. Fab Lab Tulsa
4. OK Floodplain Managers Association 3D Floodplain Model
5. The Oklahoma School of Science and Mathematics (OSSM)
6. ORU – College of Science & Engineering
7. OSU Tulsa – Dept. of Mechanical & Aerospace Engineering
8. OUPI – Oklahoma University Polytechnic Institute
9. TCC - Engineering & Engineering Technology School
10. TCC - Science and Aeronautics School
11. OSU Hardesty Center for Clinical Neuroscience
12. Educator Session Room (9 am & 11 am)



## SPONSORS

### Einstein, Platinum (\$2,500 +)

Google

AAON, Inc.

The Anne & Henry Zarrow Foundation  
and the facility provider *Tulsa Community College*

### Edison, Gold (\$1,000 +)

Oklahoma Society of Professional Engineers (OSPE)

### Engineer, Silver (\$500+)

American Society of Civil Engineers –Tulsa Branch (ASCE)

Institute of Electrical and Electronic Engineers (IEEE)

Society of American Military Engineers (SAME)

## PARTICIPATING SCHOOLS

Anderson Elementary, TPS  
Beggs Middle School  
Booker T. Washington, TPS  
Carver Middle School, TPS  
Chelsea Elementary School  
Chelsea Middle School  
Childers Middle School, BAPS  
Claremore Public Schools  
Coweta High School and Jr. High  
Eliot Elementary, TPS  
Glenpool Middle School  
Holland Hall School  
Hope Christian Homeschool  
Inola Middle School  
Jenks East Intermediate  
Legacy Homeschool Tulsa  
Lincoln Christian School, Tulsa  
Marquette Catholic School, Tulsa

Mounds Middle School  
Oklahoma School of Innovation and Experiential  
Learning, Bixby  
Oneta Ridge Middle School, BAPS  
Rejoice Christian School, Owasso  
Schmitz Homeschool  
Schrock Family  
St. Pius X, Tulsa  
Summit Christian Academy, Broken Arrow  
Toigo Homeschool  
Tulsa Tech - BAHS  
Tulsa Tech HSEP Broken Arrow Freshman  
Academy  
Tulsa Tech - Union Freshman Academy  
Twin Hills School, Okmulgee  
Wagoner High School  
University School, Tulsa  
Zarrow International School, TPS

## ORGANIZATIONS PROVIDING VOLUNTEERS

AAON, AEP/PSO, American Society of Chemical Engineers, American Society of Civil Engineers, American Society of Mechanical Engineers, American Welding Society, BKL, CEC, City of Tulsa, Contech Engineered Solutions, Flight Safety, GableGotwals, Georgia Pacific, Google, Fab Lab Tulsa, HBK Engineering, HDR, Institute of Electrical and Electronics Engineers, International Society of Automation, Kimley-Horn, Missouri S&T, Nordam, Oklahoma Society of Professional Engineers, ONEOK, ORU, OSSM, OSU-Tulsa, OUPI, PEC, PMg, Quanta Services, Spirit AeroSystems, Society of Exploration Geophysicists, Society of Manufacturing Engineers, Society of Women Engineers, TCC, TRSA, TU, TulsaKids, Tulsa Tech, US Army Corps of Engineers, and several dedicated retired engineers.